

MPG BUILDING AT BENSON CAMPUS

DESIGN ADVISORY GROUP SESSION #6

SUMMARY AND NOTES

FEBRUARY 27, 2020



THIS PAGE INTENTIONALLY LEFT BLANK

MEETING DETAILS

Meeting Location

Benson Polytechnic High School
546 NE 12th Ave, Portland, OR 97232

Attendees

PORTLAND PUBLIC SCHOOLS (PPS):

Jamie Hurd, Project Manager
Julia Brim-Edwards, School Board Rep.

DESIGN ADVISORY GROUP MEMBERS:

Cathy Reynolds
Cheryl James
Donee Deschler
Elli Sussman
Elise Higgins
Erlinda Badinas
Korinna Wolfe
Lisa Veatch
Lorna Fast Buffalo Horse
Max Whitehouse
Miguel Mejia
Nathaniel Edmunds
Susan Kaller

DESIGN TEAM

Joe Echeverri, Bassetti Architects
Lydia Burns, Bassetti Architects
Debora Ashland, Bassetti Architects
Jake Rose, Bassetti Architects

Agenda

- | | |
|-------------|--|
| 5:00 | Arrival & Welcome |
| 5:00 – 5:10 | Project Update: <ul style="list-style-type: none">+ School Improvement Bond Committee meeting+ Board of Education Process |
| 5:10 – 5:15 | Public Comment Period |
| 5:15 – 5:30 | Masterplan Update <ul style="list-style-type: none">+ Presentation of updated Masterplan layout |
| 5:30 – 6:25 | Image Board Exercise <ul style="list-style-type: none">+ Introduction+ Participant comment+ Discuss as a group |
| 6:25 – 6:30 | Public Comment Period |
| 6:30 – 6:35 | Wrap Up & Next Steps - <ul style="list-style-type: none">+ Board Process+ Next DAG meeting and/or Community Open House |

PROJECT UPDATE

To begin the meeting, Jamie Hurd welcomed all and summarized the status of the master planning process. She mentioned that the results of the DAG meetings have been posted on the PPS website (<https://www.pps.net>). The MPG content can be accessed by clicking on the "Departments" tab from the PPS homepage, navigating to "Bond (School Building Improvement Bond)" in the Department Directory, and then clicking on "MPG Building at Benson" on the left hand side, or by simply navigating to <https://www.pps.net/Page/14873>. She went on to explain that the master plan concept is currently being priced and that the results of the master planning phase are scheduled to be presented to the Bond Committee on March 12th (this date has since been pushed back), and then to the School Board on March 17th or April 7th. Jamie then described the role of the DAG moving forward into the Schematic Design and Design Development phases. There will be a Community Meeting in the spring. From there, the team will be in Construction Documents moving toward Construction.

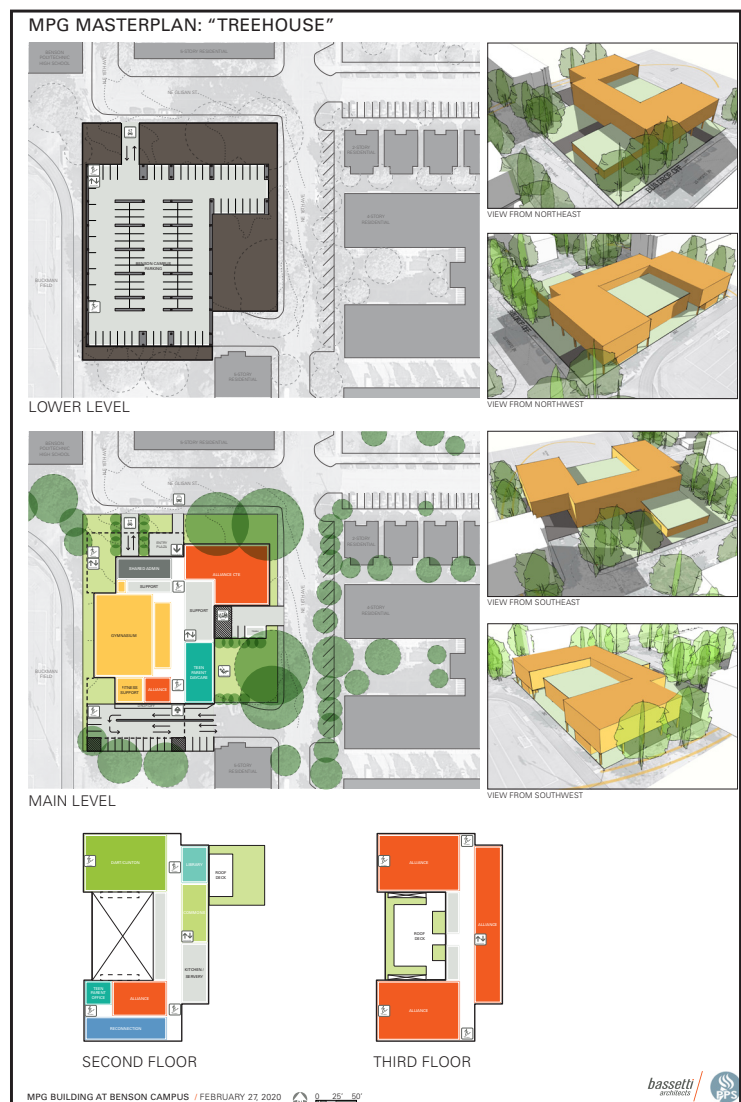
MASTER PLAN UPDATE

Joe Echeverri, Bassetti Architects, described how the Master Plan has evolved since the last DAG meeting.

He mentioned that since the previous iteration, the team has decided to relocate Teen Parent childcare to the SE corner of the building in order to gain better access to green space for the adjacent playground and to be situated further away from the south parking lot drop-off area. Additionally, the overall footprint of the building has been reduced and made more efficient to provide more green space.

Joe also explained to the group that during the design process intentional thought had been given to lay the building out based on a structural grid that could allow for a variety of structural types, such as Mass Timber or Cross Laminated Timber. The design team has been careful to not make any decisions that would preclude them from employing these types of structural systems, which may potentially be more economical due to the efficiency of construction and more environmentally responsible than a traditional steel construction.

Additionally, a remote stair at the building's northwest corner provides egress from the parking



garage as well as an option for DART/Clinton to have their own separate stair entry into the building

Currently, seating in the gym space is designed for a capacity of 400 people. Some DAG members have voiced the desire for more seating, so as part of an ongoing cost analysis exercise, the estimator is evaluating the cost to increase the gym size to accommodate 500 seats.

Some questions were raised about restroom locations, so Joe clarified that the restrooms shown along the corridor in the middle of the building would serve as the main restrooms but that there would also be single user restrooms in other program areas which are not yet articulated in the Master Plan diagram.

He went on to describe the function of the southwest wing as the "Student Resource Wing" which would house a grouping of services such as Reconnection Services and Teen Parent Offices.

It was also brought up that the roofscape would incorporate paved areas for outdoor activities, with plenty of area for plantings and vegetation.

General sustainability strategies have been considered, such as optimizing daylighting (particularly in learning spaces) while minimizing the potential Energy Use Index (EUI). The board to the right shows how the building will perform in terms of daylight and sun exposure and how photo-voltaic panels can be arranged on the roof.

DAG members responded positively to how the Master Plan had developed and voiced their support of submitting the plan to the School Board.

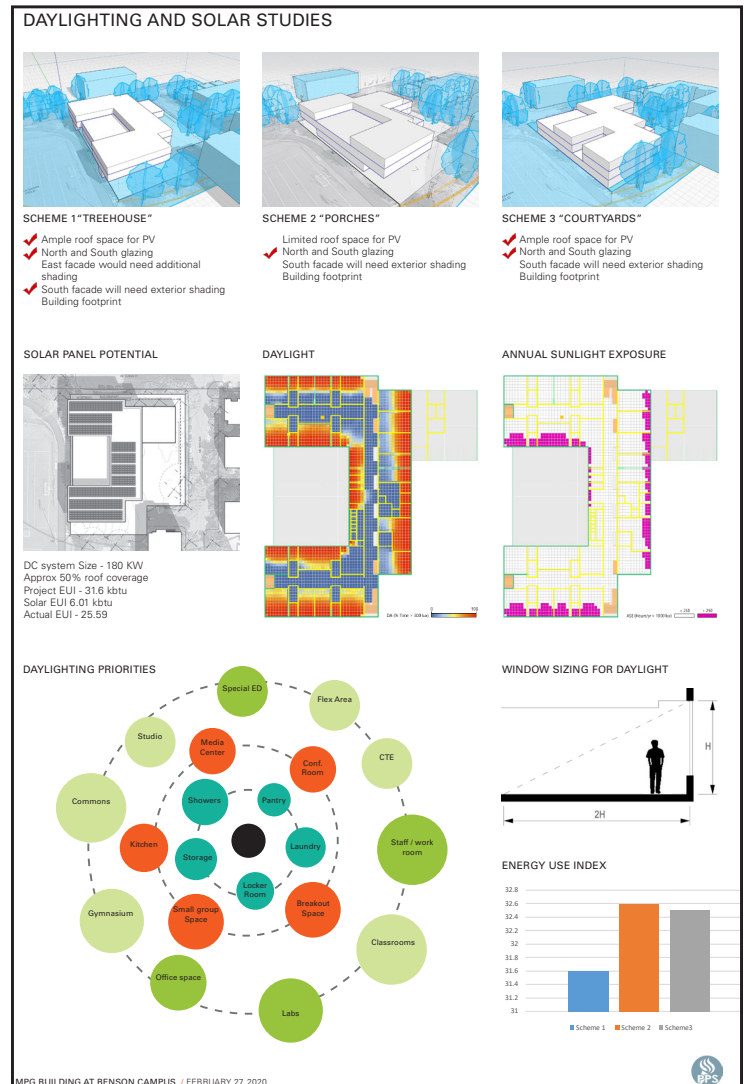


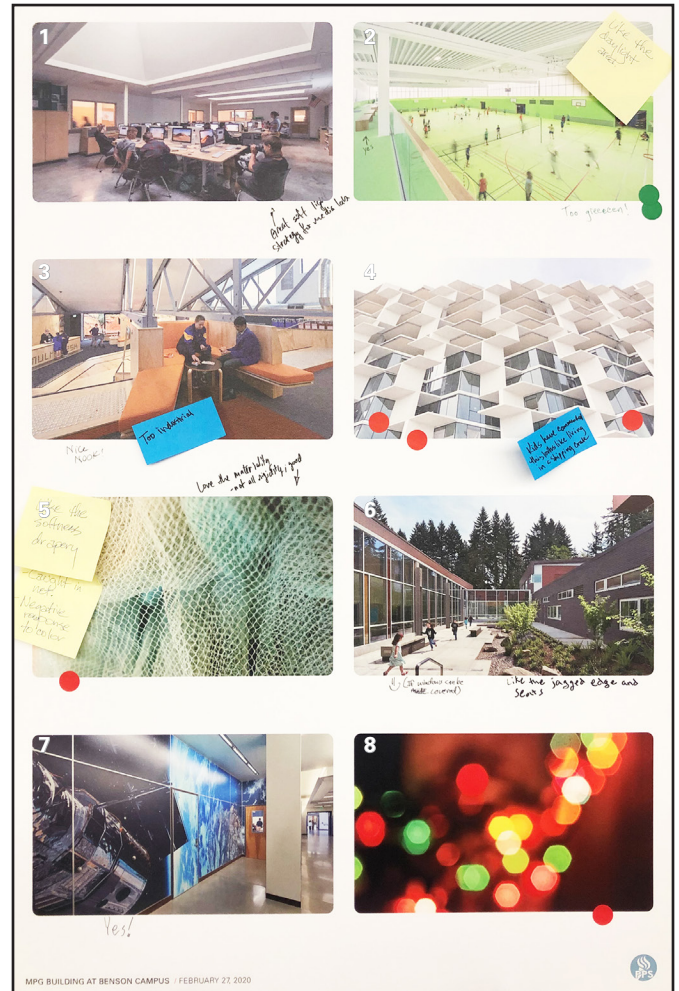
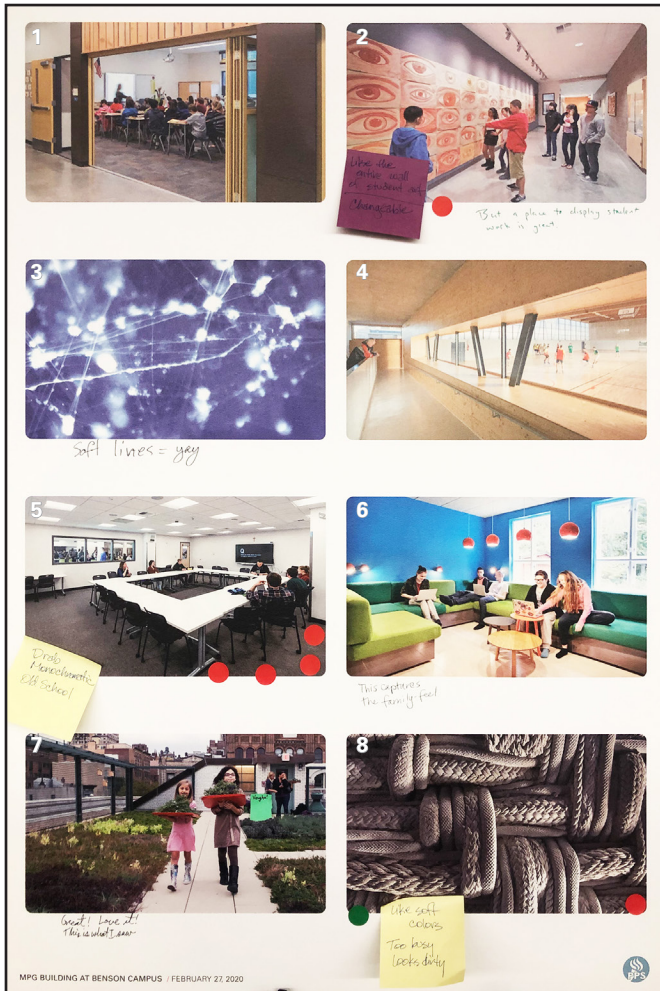


IMAGE BOARD EXERCISE

For the next activity, DAG members were asked to react to a set of images on eight boards (a total of 64 images) leaving comments addressing aspects of the image that they viewed positively (+) and aspects that they would change (Δ). They were also asked to leave green dot stickers on their three favorite images and red dot stickers on their three least favorite images.

Selected images were intended to provide DAG members with a wide range of subject matter. Some photos are architectural in nature and depict spaces and buildings similar to what DAG members might envision for the MPG project. On the other hand, some of the architectural images may be very different from what they imagine. Images of a more abstract nature were also included, showing a variety of colors and textures that could potentially serve as inspiration for components of the building design, particularly in terms of interior materiality and color.

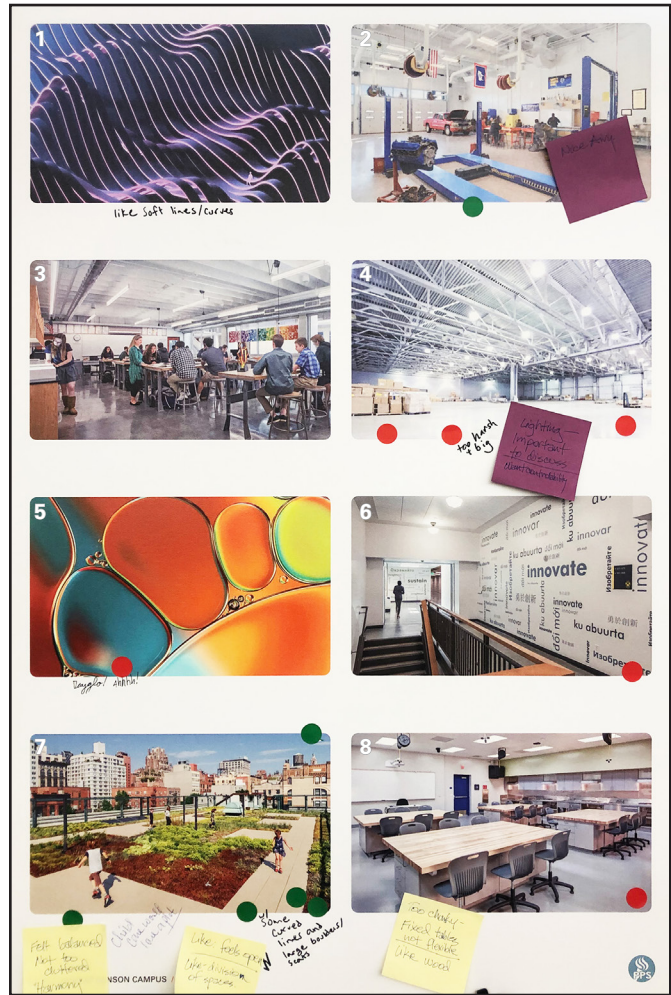
After DAG members had added notes and stickers to the images, the group came together to discuss and further explain their comments in a conversation led by the design team.



Comments:

- | | |
|---|---|
| 1. - | school |
| 2. + Like the entire wall of student art - changeable | Δ Dislike (red dot) |
| + A place to display student work is great | Δ Dislike (red dot) |
| Δ Dislike (red dot) | Δ Dislike (red dot) |
| 3. + Soft lines = yay | 6. + This captures the family feel |
| 4. - | 7. + Great! Love it! This is what I saw |
| 5. Δ Drab, monochromatic, old | 8. + Like (green dot) |
| | + Like soft colors |
| | Δ Dislike (red dot) |
| | Δ Too busy, looks dirty |

- | | |
|--|------------------------------------|
| 1. + Great soft light strategy for media lab | like living in a shipping crate |
| 2. + Yes (benches) | 5. + Like the softness, drapery |
| + Like the daylight area | Δ Caught in net |
| + Like (green dot) | Δ Negative response to color |
| + Like (green dot) | Δ Dislike (red dot) |
| Δ Too greeeen! | 6. + ☺ (if windows can be covered) |
| 3. + Nice nook | + Like the jagged edge and seats |
| Δ Too industrial | 7. + Yes! |
| 4. Δ Dislike (red dot) | 8. Δ Dislike (red dot) |
| Δ Dislike (red dot) | |
| Δ Dislike (red dot) | |
| Δ Kids have commented this looks | |



- 1. Δ Dislike (red dot)
- 2. + Nice
+ Bio-mimicry presents an instructional opportunity. Can we look for similar ways to make the building a source of lessons and learning? Think: optics and color, heat, mass, etc.
- 3. + Yes
- 4. + #2 "Bio-mimicry..."
+ Like the texture, sense of movement
+ Like (green dot)
+ Like (green dot)
+ Like (green dot)

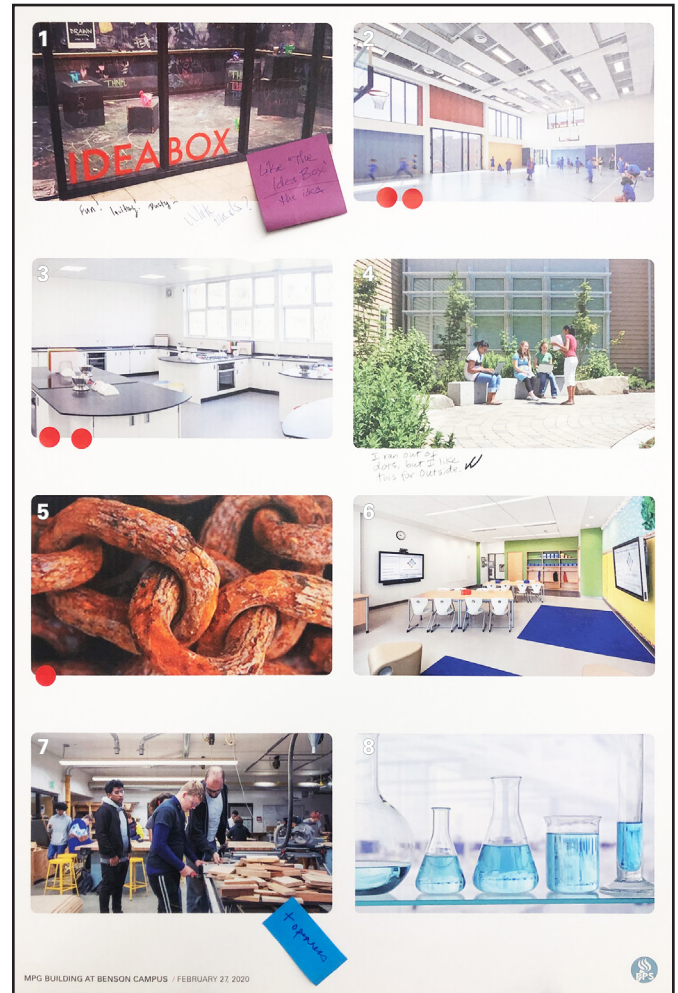
- 5. + Rock climbing wall!
+ Yay! :)
+ Me too!
Δ Too industrial
- 6. Δ Busy and cluttered, lots of table and chair legs
Δ Dislike (red dot)
Δ Dislike (red dot)
Δ Dislike (red dot)
- 7. Δ Looks like a sea creature
Δ Dislike (red dot)
+ Love geometry from nature - soothing
+ Like (green dot)
+ Like (green dot)
- 8. + Like (green dot)

- 1. + Like soft lines/curves
- 2. + Nice airy
+ Like (green dot)
- 3. -
- 4. Δ Dislike (red dot)
Δ Dislike (red dot)
Δ Dislike (red dot)
Δ Too harsh and big
Δ Lighting - important to discuss. Want controllability.
- 5. Δ Dayglo(?)! Ahhhh!
Δ Dislike (red dot)
- 6. Δ Dislike (red dot)
- 7. + Like (green dot)
+ Like (green dot)
+ Like (green dot)

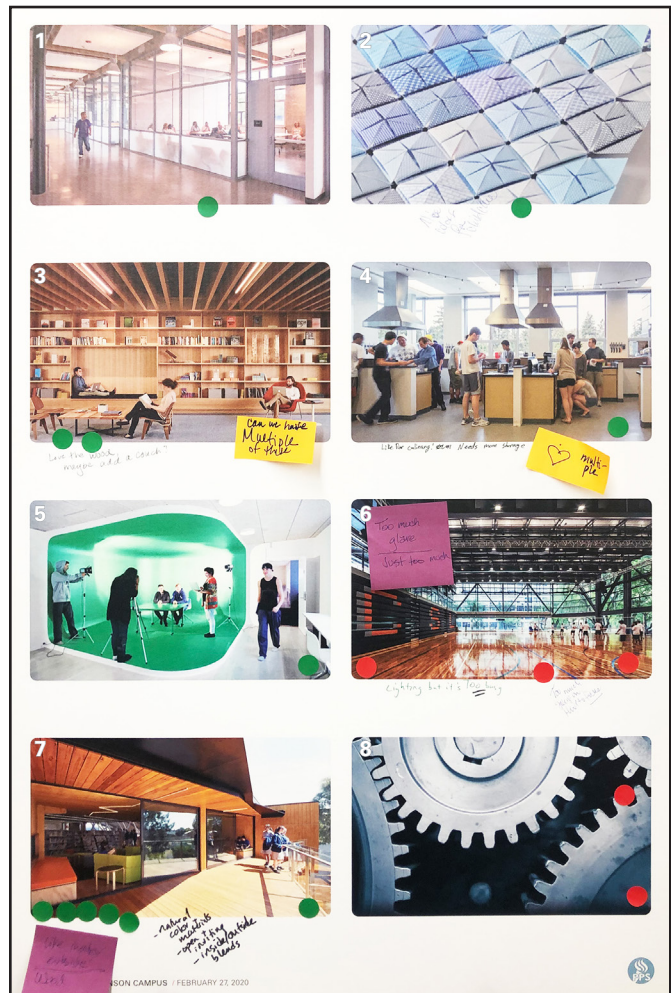
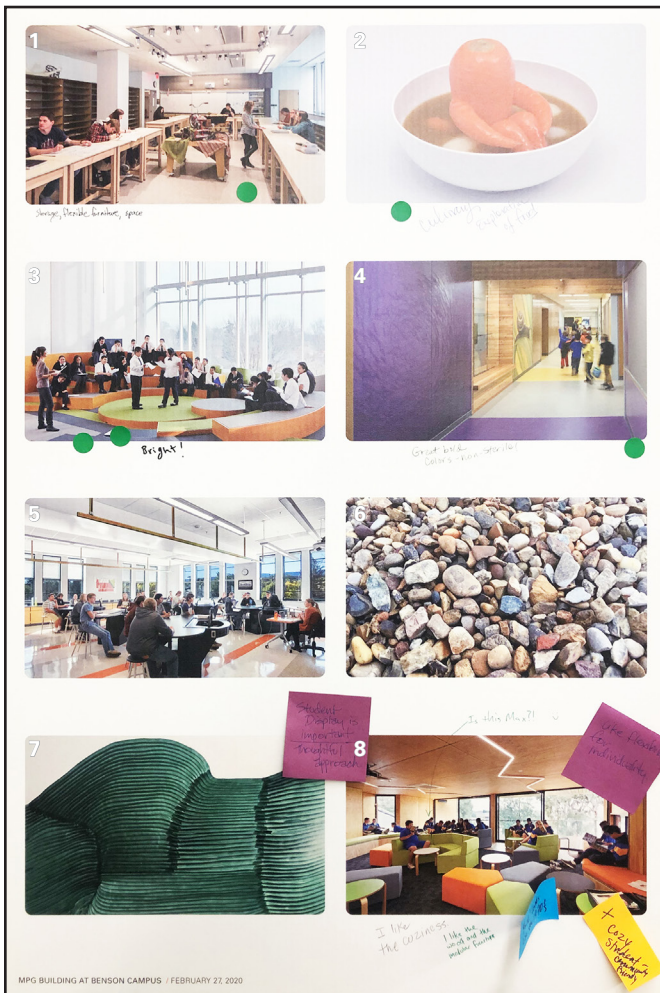
- + Like (green dot)
- + Like (green dot)
- + Felt balanced, not too cluttered, "harmony"
- + Child care would love a plot
+ Like - feels open
+ Like - division of spaces
+ With some curved lines and large boulders/seats
- 8. + Like wood
Δ Dislike (red dot)
Δ Too chunky - fixed tables not flexible



- | | |
|------------------------|--|
| 1. Δ Depressing | 6. + Like (green dot) |
| 2. - | + Appreciate the openness/transparency |
| 3. + Like (green dot) | 7. Δ Too traditional |
| 4. + Like (green dot) | 8. + Like (green dot) |
| + I want these colors! | + Warm color is nice |
| On my wall! | Δ Dislike (red dot) |
| 5. - | |



- | | |
|----------------------------|---|
| 1. + Fun! Inviting! | Δ Dislike (red dot) |
| + White boards? | 4. + I ran out of dots, but I like this for outside |
| + Like the "Idea Box" idea | 5. Δ Dislike (red dot) |
| Δ Dusty | 6. - |
| 2. Δ Dislike (red dot) | 7. + Openness |
| Δ Dislike (red dot) | 8. - |
| 3. Δ Dislike (red dot) | |



- 1. + Like (green dot)
+ Storage, flexible furniture, space
- 2. + Like (green dot)
+ Culinary exploration of food
- 3. + Like (green dot)
+ Like (green dot)
+ Bright
- 4. + Like (green dot)
+ Great bold colors - non-sterile
- 5. -
- 6. -

- 7. + Student display is important - thoughtful approach
- 8. + Is this Max?! :)
+ I like the coziness
+ I like the wood and the modular furniture
+ Cozy student-community friendly
+ Like flexibility for individuality
Δ Yuck! Looks like the 1970s

- 1. + Like (green dot)
- 2. + Nice colors for childcare
+ Like (green dot)
- 3. + Love the wood, maybe add a couch?
+ Can we have multiple of these?
+ Like (green dot)
+ Like (green dot)
+ Like (green dot)
- 4. + Like for culinary!
Needs more storage
+ ♥ Multiple
+ Like (green dot)
- 5. + Like (green dot)
- 6. Δ Too much glare, just too much
Δ Lighting but it's TOO busy

- Δ Too much going on, hard to focus
- Δ Dislike (red dot)
- Δ Dislike (red dot)
- Δ Dislike (red dot)
- 7. + Like (green dot)
+ Like (green dot)
+ Like (green dot)
+ Like (green dot)
+ Like (green dot)
+ Like (green dot)
+ Like inside/outside, wood
+ Natural color materials, open and inviting, inside/outside blends
- 8. Δ Dislike (red dot)
Δ Dislike (red dot)

WRAP UP

To wrap up the meeting, DAG members discussed the approach for taking the Master Plan to the Bond Committee/School Board. Julia Brim-Edwards, School Board Representative, suggested that the DAG group actively reach out with support/quotes/thoughts on the Master Plan. She suggested having at least one representative from each school attend the School Board Meeting. The group agreed to further discuss and form a plan.

NEXT STEPS

Presentation to School Improvement Bond Committee
Presentation to School Board
Community Open House - TBD (late April or early May)